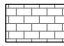
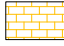
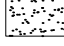



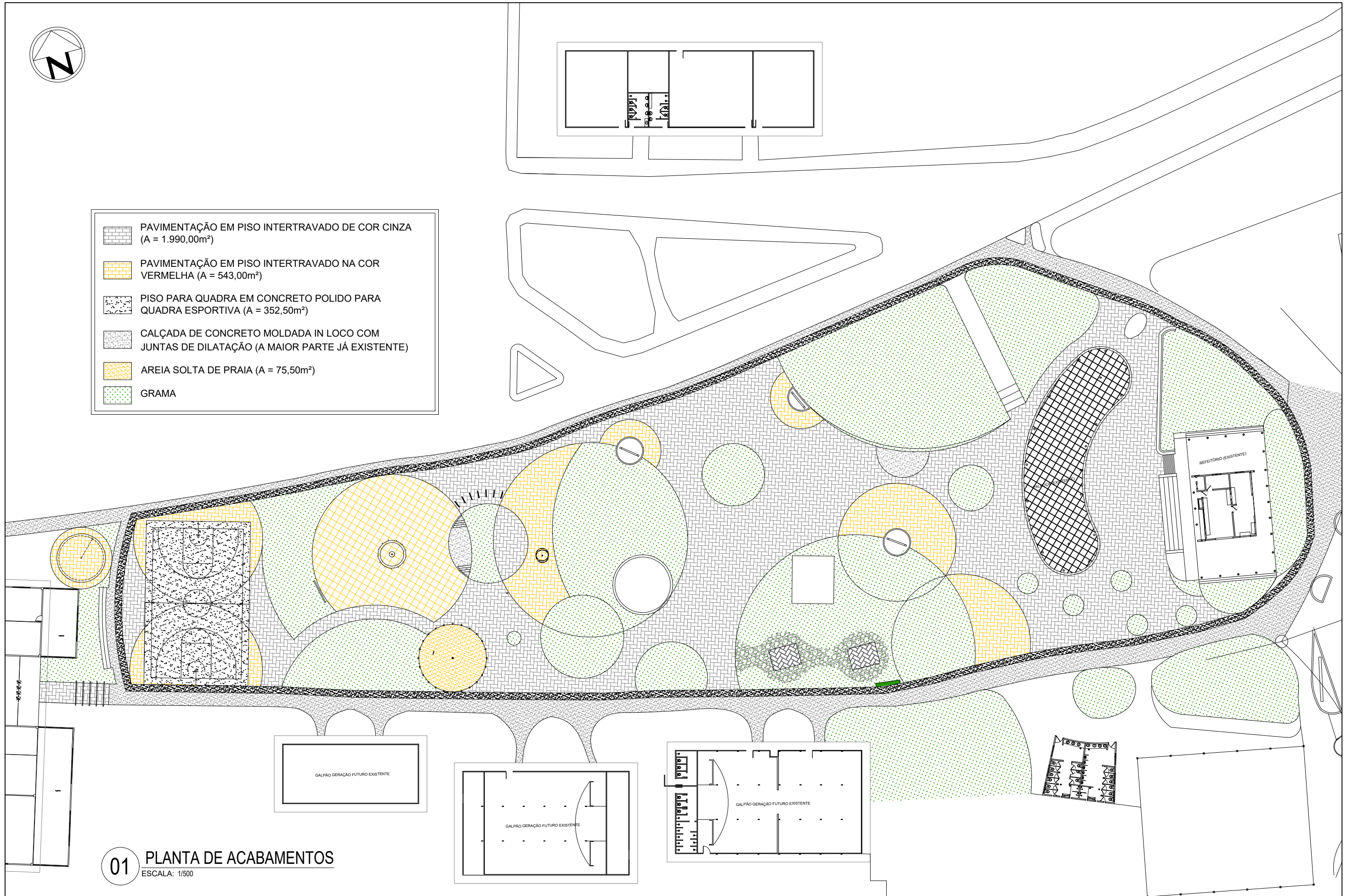




-  PAVIMENTAÇÃO EM PISO INTERTRAVADO DE COR CINZA (A = 1.990,00m²)
-  PAVIMENTAÇÃO EM PISO INTERTRAVADO NA COR VERMELHA (A = 543,00m²)
-  PISO PARA QUADRA EM CONCRETO POLIDO PARA QUADRA ESPORTIVA (A = 352,50m²)
-  CALÇADA DE CONCRETO MOLDADA IN LOCO COM JUNTAS DE DILATAÇÃO (A MAIOR PARTE JÁ EXISTENTE)
-  AREIA SOLTA DE PRAIA (A = 75,50m²)
-  GRAMA



01 PLANTA DE ACABAMENTOS
ESCALA: 1/500



PROJETO:
PRAÇA

ETAPA:
ESTUDO PRELIMINAR

DATA:
17/05/18

ESC.:
1/500

RESP. PROJETO:
LRS

PR.:
03